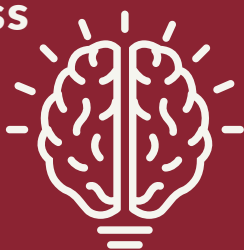


Learning Effectiveness Program (LEP)



Academic Resources for Students
with Learning Differences

What is LEP?

An **Academic Resource** for students at the University of Denver (**DU**) who have a diagnosed **learning difference**.

What does LEP offer?

- An assigned **Academic Counselor**
- Individual **Tutoring** Appointments
- **Executive Functioning** Specialist
- Peer **Mentoring**
- **Social** Events
- And More!

Transition from High School to College

JETT (Journey to Empowerment Through Transitions) program before first year orientation.

All enrolled LEP students can participate!

How do I use LEP?

Complete online LEP **application** and submit **documentation** supporting your learning difference.

Apply to LEP when you apply to DU!

Enroll by **July 1st** before you start at DU.

What does LEP cost?

All resources are included in the **\$1,350/quarter** price (3 quarters: Fall, Winter, and Spring).

Limited full and partial **LEP Scholarships** available!
Apply each Spring.

What if I need other support?

Look on the other side of this card!

FOR MORE DETAILS ABOUT LEP
VISIT | WWW.DU.EDU/LEP
EMAIL | LEP@DU.EDU
CALL | (303) 871-2372

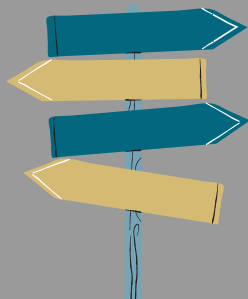


UNIVERSITY of
DENVER



UNIVERSITY of
DENVER

STUDENT AFFAIRS &
INCLUSIVE EXCELLENCE



Find the right resources for YOU!

What supports are available for students at DU?

There are **many** different departments at DU to help you **succeed** in college! Check out the **resources** and **contact them** to learn more.

Accommodations

Accommodations like **extended time**, **assistive technology**, and more are available by request through:

Disability Services Program
dsp@du.edu
(303) 871-3241

Physical and Mental Health

Make **appointments** on campus with the:

Health and Counseling Center
info@hcc.du.edu
(303) 871-2205

Living On or Off Campus

DU has resources to help you find the right **home away from home**:

Housing and Residential Education
housing@du.edu
(303) 871-2246

Class Selection / Registration

Need help picking your **classes** and making sure you'll **graduate** on your own schedule? Contact:

Academic Advising
advising@du.edu
(303) 871-7001

Academic Support and Tutoring

Looking for **tutoring** or individual **executive functioning** support at DU? Want to connect with other **neurodiverse** learners? Apply to the LEP:

Learning Effectiveness Program
lep@du.edu
(303) 871-2372

FOR MORE INFO
VISIT | WWW.DU.EDU

